

## RED DEER.

## NOTES.

Seeing a photograph of a red-deer's head in the current number of the Archæological Society's Proceedings, I think the enclosed may be of interest. It is of one of a pair of fossilized red deer heads taken from the river Waveney, out of a hole, 6 feet below the river bed, washed out by a flood in July, 1913.

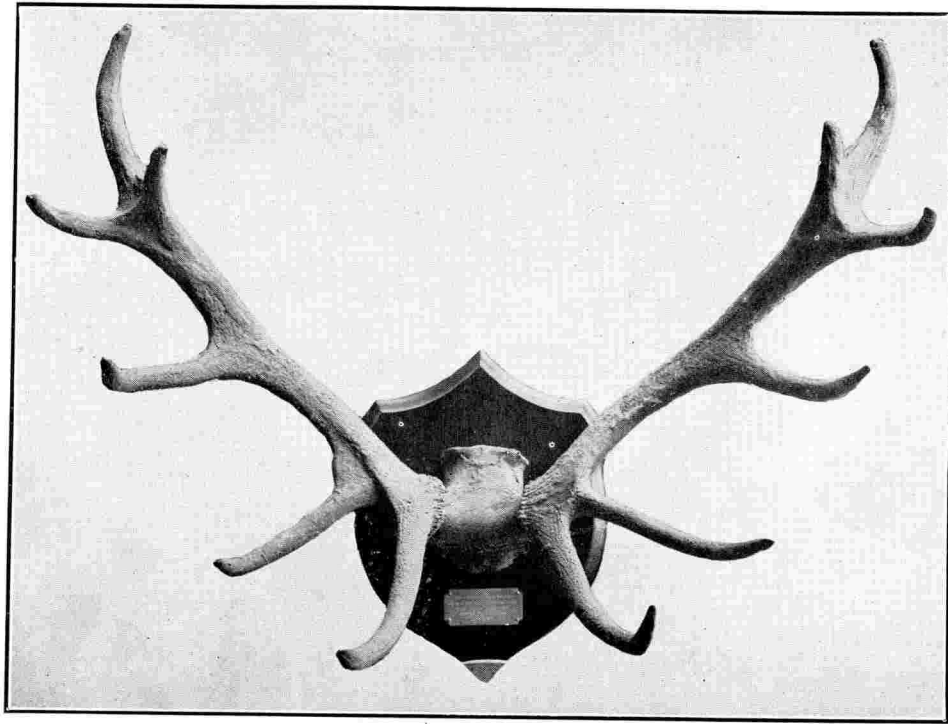
The other pair is almost equally perfect and they are preserved at Flixton Hall.

R. SHAFTO ADAIR, Bt.

## MEASUREMENTS.

Length on outer curve	..	..	31 ins.
Splay at tips	..	..	35 ins.
Girth, beam above bay	..	..	7½ ins.
Length brow antler	..	..	15½ ins.
Widest spread	..	..	39½ ins.

12 points.



RED DEER ANTLERS.

# GENERAL INDEX TO VOL. XX.

## A.

Acton, 74, 102  
 Aldeburgh, 140  
 Alderton, 140  
 Alpheton, 74  
 Archdeacons, Norwich, 11  
 Ashfield, Great, Cross, 280  
 Austin Friars, 36

## B.

Badingham, 234  
 Bardwell, 291  
 Barnham, 140  
 Barton, Great, 74  
 Bergholt, *see* East Bergholt  
 Boxford, 101  
 Bradfield Combust, 140  
 Bradley, Little, 43  
 Bramfield, 140  
 Brasses at Great Thurlow, 43 ;  
     at Little Bradley, 43  
 Bricett, Great, 140  
 Brockley, 75  
 Bruisyard, 235  
 Bull, Anthony, 200  
 Bull, John, 200  
 Burgate, 75  
 Burgh Castle, 94  
 Bury, Limitation, 41  
 Butley Priory, 292  
 Buxhall, 140

## C.

Carlford, 140  
 Chattisham, 140  
 Chedburgh, 75  
 Chelmondiston, 140  
 Chilton, 101  
 Clare, 113 ; Austin Friars, 36  
 Cockfield, 75  
 Combs, 140  
 Constable, John, 181  
 Copdock, 173  
 Crosses, Ashfield, 280 ; Keding-  
     ton, 287

## D.

Darsham, 140  
 Debenham, 97, 110, 140  
 Deeds, Suffolk, 73  
 Deer, Red, 32  
 Defences, Military, Lothingland, 3  
 Dennington, 149, 233  
 Depden, 75

Diss, 141  
 Drinkstone, 75, 140  
 Dunwich, 301  
 Dunthorne MSS, 147

## E.

East Bergholt, 168  
 Elmham, South, 104, 141 ; St.  
     Peter's Hall, 48  
 Elmsett, 141  
 Erwarton, 298  
 Everard, Bishop of Norwich, 186  
 Excursions—  
     1928 . . . 93  
     Yarmouth, Gorleston and Burgh  
         Castle  
     Debenham, Framsden and Otley  
     Polstead, Boxford, Chilton, Acton,  
     Long Melford and Kentwell  
     Hall  
 South Elmham district, Rumburgh,  
     Wissett and Halesworth  
     1929 . . . 233  
 Framlingham, Dennington, Bading-  
     ham, Sibton and Bruisyard  
 Rushbrook, Hawstead and Stan-  
     ningfield  
 Newmarket and district  
 Trimley, Felixstowe, Nacton,  
     Alnesbourne and Broke Hall  
     1930 . . . 290  
 Ashfield, Walsham le Willows,  
     Bardwell and Ixworth  
 Butley, Orford, Sudbourne and  
     Iken  
 Keddington, Great Thurlow,  
     Little Bradley and Cowlinge  
 Woolverstone, Erwarton, Stutton  
     East Bergholt and Stratford  
     St. Mary  
     Dunwich

Eye, 141, 260

## F.

Falkenham, 141  
 Felixstowe, 241  
 Flowton, 75  
 Fornham, 75, 112, 141  
 Fossils, Red deer, 232  
 Framlingham, 141, 233  
 Framsden, 99, 141  
 Fressingfield, 141  
 Friston, 141

## G.

Gipping, St. Nicholas Chapel, 270  
 Gislegham, 110, 142  
 Gorleston, 93  
 Groton, 76  
 Grundisburgh, 142

## H.

Halesworth, 108, 142  
 Haughley, 142  
 Haverhill, 142  
 Hawstead, 76  
 Hemingford Grey, 76  
 Hepworth, 76  
 Heraldry, Gipping Chapel, 278  
 Holton, 142  
 Horham, 142  
 Horringer, 76  
 Hundon, 76  
 Huntingfield, 142

## I.

Iken, 294  
 Ipswich, Windmills, 142  
 Ixworth, 291

## K.

Kedington, 295; Cross, 287  
 Kentwell Hall, 103

## L.

Latchingdon, 77  
 Lavenham, 77, 143; Limitation,  
 41  
 Lawshall, 76  
 Laxfield, 143  
 Letheringham Abbey, 9  
 Libraries, Suffolk, 80  
 Limiters, Suffolk, 36  
 Long Melford, *see* Melford  
 Lord Lieutenantcy under Tudors,  
 227  
 Lothingland, Island of, 1

## M.

Manuscript Books, Suffolk, 80  
 Market Weston, 77  
 Marlesford, 144  
 Melford, 77, 101  
 Mellis, 77  
 Melton, 143  
 Mendlesham Green, 144

## Memoriam Notices :

Andrews (Mrs. Beatrice M.), 247  
 Blaxland, (Canon G. C.), 247  
 Hervey (Lord Francis), 318  
 Warren (Canon F. E.), 317  
 Musters, Lothingland, 3

## N.

Nacton, 242  
 Nayland, 77  
 Newmarket, 144, 239  
 Norwich, Archdeacons, 11.

## O.

Obituaries, *see* Memoriam Notices  
 Orford, 293  
 Otley, 99

## P.

Palgrave, 144  
 Parham, 144  
 Pedigrees :  
 Arundell-Carminow, 278  
 Green and Dunthorne, 184  
 Peche, *facing* 46  
 Sancroft, *facing* 122  
 Tyrell-Darcy, 277  
 Pettaugh, 144  
 Polstead, 77, 101  
 Preston, 77

## R.

Rede, 77  
 Redisham, 144  
 Reviews :  
 Baker : Blithe Waters, 314  
 Cobbold : Deborah Lee, 308  
 Hervey : St. Eadmund of East  
 Anglia and his Abbey, 248  
 James : Suffolk and Norfolk, 304  
 Lucas : The Fenman's World,  
 311  
 Oliver : The Cottages of England,  
 251  
 Scott : An Englishman at Home  
 and Abroad, 306  
 Thornton : A History of Clare,  
 Suffolk, 113  
 Williamson : Letters of Osbert  
 of Clare, 248  
 Rood Screens, 214  
 Rougham, 144  
 Rumburgh, 107  
 Rushbrooke, 237  
 Rushmere, 144

## S.

Sancroft, William, Abp., 117  
 Saxmundham, 145  
 Saxstead, 145  
 Scott, J. B., 306  
 Screenwork, Suffolk, 214, 255  
 Shotley, 144  
 Sibton, 234  
 Snape, 145  
 Stanningfield, 77, 238  
 Stanton, 78  
 Stoke Ash, 78  
 Stoke-by-Clare, Priory, 265  
 Stoke-by-Nayland, 78  
 Stowlangtoft, 78  
 Stradbroke, 145  
 Stratford St. Mary, 112  
 Sudbury, 145  
 Suffolk Courts in English, 199  
 Suffolk Limiters, 36  
 Suffolk MS. Books, 80  
 Suffolk Topography, 178  
 Sweffling, 145  
 Swilland, 145

## T.

Theberton, 145  
 Thelnetham, 146  
 Thetford, Priory, 39  
 Thornden, 145  
 Thornham, 78, 145

Thorpeness, 146  
 Thrandeston, 78  
 Thurlow, Great, 43  
 Thurston, 145  
 Treasure-trove, 320  
 Trimley, 145, 240  
 Tyrell, Sir James, 270

## W.

Wangford, 146  
 Walsham-le-Willows, 78, 290  
 Wenhaston, 146  
 Westleton, 146  
 Wetheringsett, 146  
 Whelnetham, Great, 78  
 Whepstead, 78  
 Wickham Skeith, 78  
 Windmills, Suffolk, 125  
 Wingfield, 146  
 Wingfield, Lady Anne, 10  
 Wingfield, Sir Anthony, 9  
 Woodbridge, 146  
 Woolpit, 146  
 Woolverstone, 297  
 Worlingworth, 146  
 Wortham, 146

## Y.

Yarmouth, 96  
 Yaxley, 78