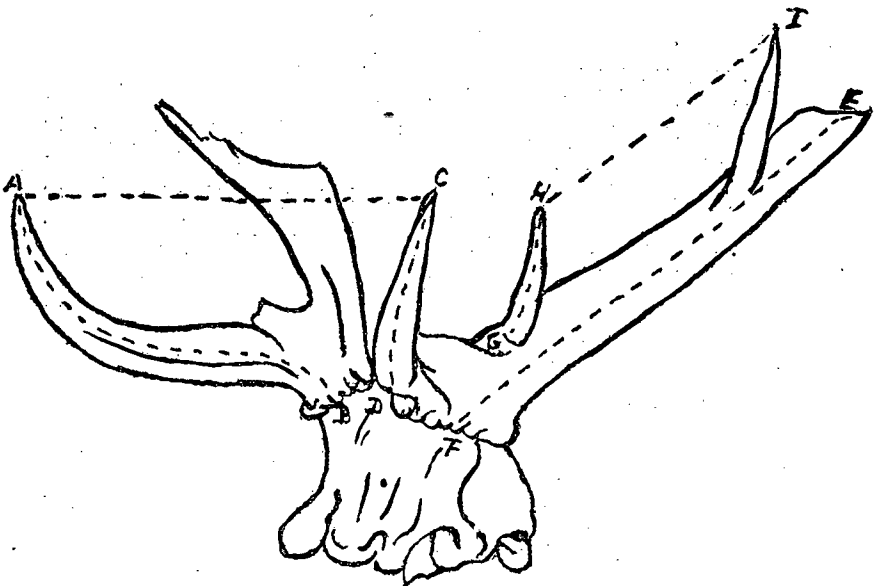


FOSSIL REMAINS OF THE RED DEER.



The winter storms have done much damage to the Suffolk coast-line. In January, 1930, a great part of the Bawdsey shore was washed away by heavy rains, and since that month erosion has been continuous. Two notable changes have been effected by the ravages of the sea; Martello Tower, Y, has been entirely submerged and destroyed; the shore is now lined with shingle brought down by waves from Shingle Street.

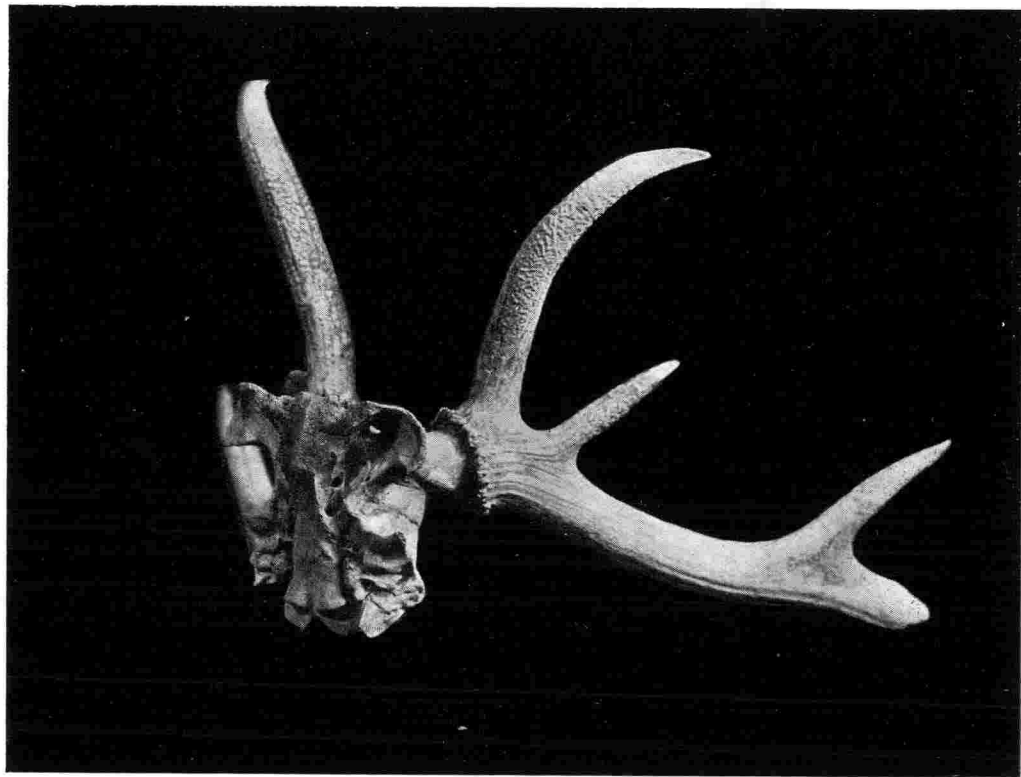
Professor Owen in his "Fossil Animals and Birds," published in 1846, at page 473, states that "the oldest stratum in Britain yielding evidences of a *Cervus* of the size of the red deer is the red crag at Newbourne." It was from the base of the red crag at Bawdsey that the fine specimen of antlers illustrated in these pages was exposed recently. The line drawing gives the measurements of the antlers. They are as below:—

Brow tine A to B	14 ins.
Brow tine C to D	13 ins.
Distance between tips of Brow tines A to C	16 ins.
Tines H to G	4.5 ins.
Distance between tips of tine H to I	9 ins.
Length of antler E to F	16 ins.

V. B. REDSTONE.



FOSSILIZED ANTLERS FROM THE RED CRAG, BAWDSEY. JAN., 1930.
(Photographed by H. Needs, Woodbridge).



VIEW TO SHEW DEPOSIT OF BLACK SOIL AT BASE OF RED CRAG.